

WARDROBE FITTINGS

TAG SYNERGY ELITE



WARDROBE TUBE

- > Round with protective cap
- > Insert on top
- > Ø: 33 mm (1 5/16")

Material: Aluminum, anodized; Cap: Plastic

Finish	Cap	2438 (96")	2337 (92")
polished chrome	clear	801.42.240	801.42.241
matt aluminum	clear	801.42.440	801.42.441
matt nickel	clear	801.42.640	801.42.641
matt gold	clear	801.42.040	801.42.041
black	black	801.43.340	801.43.341
slate	black	801.42.340	801.42.341

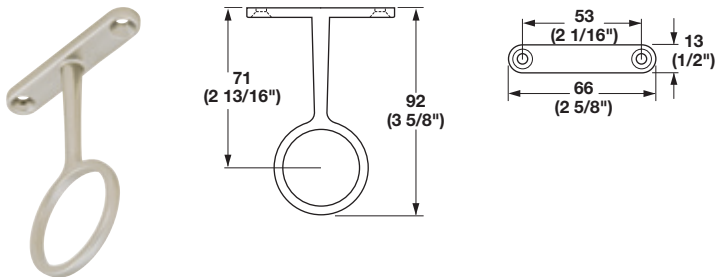


WARDROBE TUBE SUPPORT

- > Unique two-part design allows the support to fully surround the tube ends
- > Connect the wedge shaped brackets into line bore holes and side supports onto the end of the tube, then slide supports onto the wedge shaped brackets
- > With two pins for 5 mm (3/16") holes
- > 32 mm (1 1/4") spacing with an additional screw hole for side panel mounting

Material: Zinc-plated

Finish	Item No.
polished chrome	803.39.210
matt aluminum	803.39.410
matt nickel	803.39.610
matt gold	803.39.910
black	803.64.410
slate	803.39.710



WARDROBE TUBE CENTER SUPPORT

- > Surface mounted
 - > For Ø33 mm (1 5/16") tube
- Material: Zinc die-cast

Finish	Item No.
polished chrome	802.06.267
matt aluminum	802.06.367
matt nickel	802.06.667
matt gold	802.06.067
black	802.06.767
slate	802.06.467

Supplied With
Screws

ORDERING IS EASY AND CONVENIENT

Online & Live Chat: www.hafele.com | Phone: 800 423 3531 | Email: orders@hafele.us