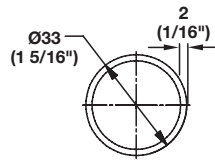


WARDROBE FITTINGS

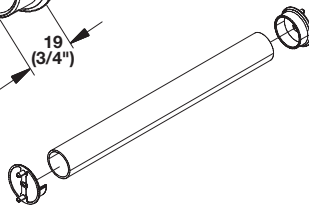
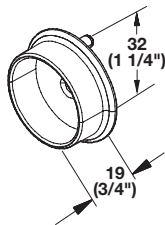
TAG SYNERGY



WARDROBE TUBE

> Round
 > Ø: 33 (1 5/16")
 Material: Aluminum, anodized or powder-coated

Finish	2438 (96")	2337 (92")
polished chrome	801.42.200	801.42.201
matt aluminum	801.42.900	801.42.901
matt nickel	801.42.600	801.42.601
black	830.28.715	830.28.716
white, powder-coated	801.42.710	801.42.711



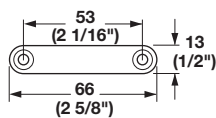
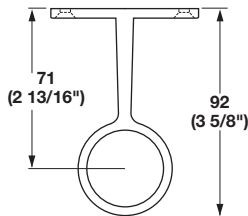
WARDROBE TUBE SUPPORT

> With two pins for 5 mm holes
 > 32 mm (1 1/4") spacing with an additional screw hole for side panel mounting
 Material: Zinc-plated, anodized or powder-coated

Finish	Item No.
polished chrome	803.56.200
matt aluminum	803.56.900
matt nickel	803.56.600
black	803.56.300
white, powder-coated	803.56.710

Supplied With

1 Half closed support
 1 Fully closed support



WARDROBE TUBE CENTER SUPPORT

> Surface mounted
 > For Ø33 mm (1 5/16") tube
 Material: Zinc die-cast

Finish	Item No.
polished chrome	802.06.267
matt aluminum	802.06.367
matt nickel	802.06.667
black	802.06.767

Supplied With

Screws